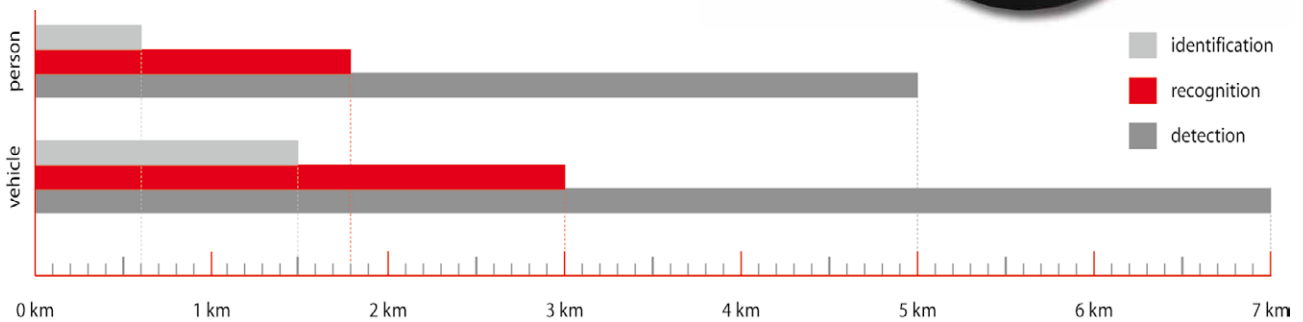


VarioVIEW™ 150

Lightweight binocular long-range thermal imaging system



Identification of people in front of a vehicle



Surveillance and intelligence

Outstanding performance features

- Maximum range in this class of device
- Excellent geometrical resolution (640 x 480) IR pixels
- High thermal resolution (< 70 mK)
- Infrared frame rate 30 Hz
- Uncooled FPA detector – minimal follow-up costs
- LRF (1,550 nm, hardly detectable) 5,000 m, eye-safe
- Intuitive operability, simple handling
- High-resolution binocular OLED viewfinder
- Long operating time (> 5 h per battery charge)
- Low weight (< 3.0 kg)

Users and fields of application

- Police force
- Border Police, Customs
- Federal Office for the Protection of the Constitution
- Disaster relief organization
- Rescue services
- Security services

- Site protection, surveillance and intelligence
- SAR missions, mountain rescue service
- Civil defense and emergency management

VarioVIEW™ 150

Lightweight binocular long-range thermal imaging system

The newly developed binocular thermal imaging system VarioVIEW™ made by the German manufacturer JENOPTIK Laser, Optik, Systeme GmbH combines a high resolution infrared imager with an eye-safe laser range finder (LRF). A **microbolometer detector** of the highest geometrical resolution currently available in the commercial sector of **(640 x 480) IR pixels** in connection with a highly precise fast 150 mm lens provides for **excellent ranges in object detection, recognition and identification**. The LRF works at 1,550 nm, permits most precise distance measuring and is hardly detectable. The easily portable thermal imaging system VarioVIEW™ of less than three kilos in weight distinguishes itself by rugged design, intuitive operability and easy handling.

Technical specifications

Spectral range	(7.5 ... 14) μm
Detector, Detector format (pixel)	Uncooled microbolometer Focal Plane Array, (640 x 480)
Temperature resolution @ 30 °C	Better than 0.07 K
IR-frame rate	25/30 Hz
Lens (field of view)	150 mm (6.1 x 4.6)°
Electronic zoom	2x and 4x
Focus	Motorized; auto focus function
Detection range (person)	Up to 5 km
Detection range (vehicle)	Up to 7 km
Laser range finder (LRF), type of laser	Diode laser 1,550 nm, eye-safe, hardly detectable
Measurement accuracy of LRF	±1 m (1σ)
Measurement range of LRF	(60 ... 5,000) m
Viewfinder	Binocular, monochrome with eye cup
Type of viewfinder display (pixel)	OLED (800 x 600)
A/D conversion	14 Bit
Interface	PAL/NTSC-FBAS, external power supply (12 ... 24) VDC
Power supply	High capacity Li-Ion battery (fast rechargeable)
Rechargeable battery capacity per charge	More than 5 hrs without battery change
Operation temperature	(-20 ... 50) °C
Dimensions	(270 x 255 x 155) mm
Weight	2.9 kg (without battery)

Design and specification are subject to permanent development; subject to changes in the sense of technical progress.

Standard accessories

- Robust, water-tight transport case
- Tilting head video tripod with transport case
- 2 pcs. of high-capacity Li-Ion rechargeable batteries
- Instant charger with vehicle adapter
- Plug in mains supply (100 ... 240) VAC/15 VDC (2 A)
- Vehicle adapter (9 ... 32) VDC/15 VDC (2 A)
- Extension cable and video cable (BNC/Cinch)
- Manual and Brief Operating Instructions



SAR mission



Civil defense and emergency management



Site protection

Produced by