

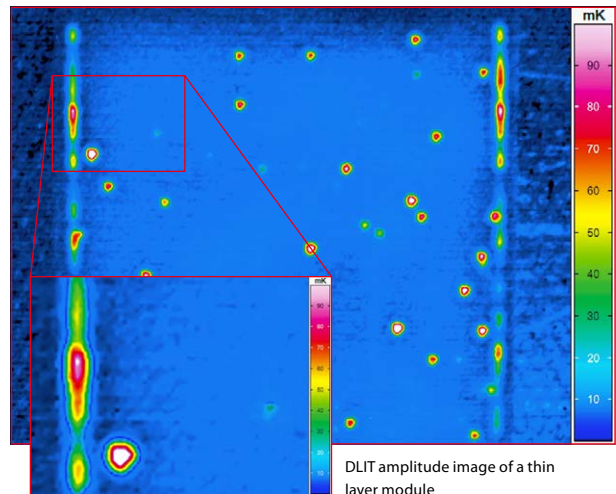
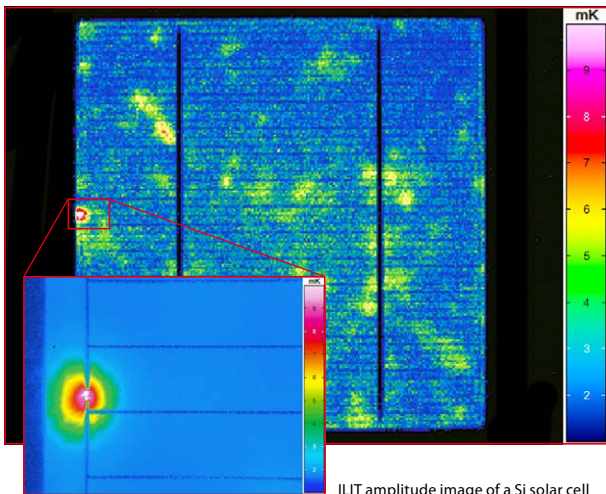
## Automated Testing Solution PV-LIT

Solar Cell and Solar Module Testing Using LimoLIT (ILIT) and VomoLIT (DLIT)



Automated testing solution allows solar cells as well as complete solar modules already to be checked during the manufacturing process based on shortest measurement times (routine test) or as part of an extensive and detailed testing process with individual measurements e.g. in a test laboratory (individual testing).

The use of non-contact (LimoLIT) or contact (VomoLIT) activation of the object being measured results in local warming being induced at faults (shunts) which can then be detected and displayed by means of a high-performance thermographic camera and the use of a lock-in procedure.



### The Modular Test Bench Offers the Following Benefits

- Laboratory operation and serial testing possible
- Testing of varying sizes of solar cells and solar modules
- High-performance software for recording the measurements and for saving, analysing and comparing all measurement data
- Easy handling of the samples due to horizontal operation position
- LimoLIT: illumination with an LED array – no laser necessary
- Optional accessory for fixation and tempering of the object being measured
- Identic standard configuration for fault detection based on contact and non-contact activation for all PV materials
- Exchangeable lenses for overview and detail views



Contact activation (VomoLIT)



Non-contact and contact activation in measurement cell (LimoLIT/VomoLIT)

#### Headquarters

InfraTec GmbH  
Infrarotsensorik und Messtechnik  
Gostritzer Straße 61 – 63  
01217 Dresden / GERMANY

Phone +49 351 82876-610  
Fax +49 351 82876-543  
E-mail thermo@InfraTec.de  
[www.InfraTec.eu](http://www.InfraTec.eu)

#### USA office

InfraTec infrared LLC  
5048 Tennyson Pkwy.  
Plano TX 75024 / USA

Phone +1 844-226-3722 (toll free)  
E-mail thermo@InfraTec-infrared.com  
[www.InfraTec-infrared.com](http://www.InfraTec-infrared.com)

# Automated Testing Solution PV-LIT

Solar Cell and Solar Module Testing Using LimoLIT (ILIT) and VomoLIT (DLIT)

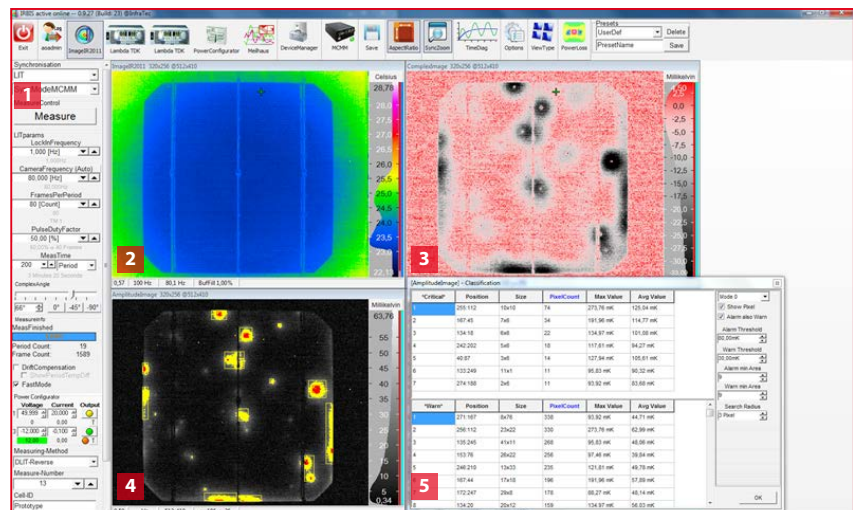
## Technical Specifications

<b>Measuring cell</b>	<b>ImageIR®</b>	<b>VarioCAM® HD head</b>
Detector formats (IR pixels)	(1,280 × 1,024) / (640 × 512) / (320 × 256)	(1,024 × 768) / (640 × 480)
Spectral range	(2 ... 5) µm	(7.5 ... 14) µm
Frame rate (full screen mode / subwindow mode)	Up to 350 Hz / 1,200 Hz	Up to 60 Hz / 240 Hz
<b>Contactless illumination source (ILIT)</b>		
Illumination source, standard		Infrared LED panels (~ 220 W)
Illumination source*		Spectral selective LED panels for IR-insensitive solar cells
<b>Contact illumination source via tactile spikes (DLIT)</b>		
Electric solar cell contact / modul contact		For electric BIAS operation and VomoLIT up to 600 V Integration of four quadrant power supplies and special power supplies (e.g. Keithley)
Sample holder (chuck) (W × H × D)		(250 × 30 × 250) mm
Thermochuck*		Fluid cooling and heating Vacuum fixation
Objective of the infrared thermographic camera		Customer specific (microscope to wide angle)
Dimensions (W × H × D)		(500 × 1,050 × 500) mm
Weight		55 kg (without camera and chuck)
<b>Evaluation unit</b>		
Dimensions (W × H × D)		(553 × 589 × 600) mm
PC		19" industry PC
Power supply		230 V AC / 110 V AC
Weight		74 kg (incl. PC)

\* optional

## Software

- Operational software with comprehensive analysis options in laboratory conditions
- Software add-on for automatic error classification based on parameter settings
- Intuitive user interface for easy operation
- Real-time display of the object being measured in various states
- Multifaceted memory options for image data and measurement results
- Alternative 0°, 90° or freely set phase angle image for representation of complex intensity information
- Drift compensation, undersampling, DC-mode, IV measurement, power loss measurement, user and recipe management
- Different interfaces to other systems: e.g. Profibus, Ethernet



- 1 Parameter setup
- 2 Live image
- 3 Complex image

- 4 Amplitude image
- 5 Classification / phasing image