

## Thermography in CFRP Processing

ImageIR® 8300 – precise, reliable and efficient

*In 1960 when the first laser was announced there was no indication of how the field would develop and today there is almost no area of science and industry that remains untouched by lasers. New applications emerge almost daily demanding the development of even more sophisticated laser systems and one of the leading global research and development institutions for laser-based solutions and their implementation is Laser Zentrum Hannover e.V. (LZH). Many of these new systems operate at very high laser intensity levels and consequently require close control of thermal processes. This is achieved by the use of infrared thermography which is both contact-less and provides imagery.*

**Laser Zentrum  
Hannover e.V.**

30419 Hannover

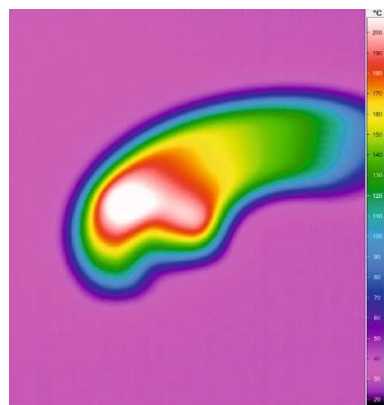
[www.lzh.de](http://www.lzh.de)

InfraTec solution :  
ImageIR® 8300



Dr. Peter Jäschke

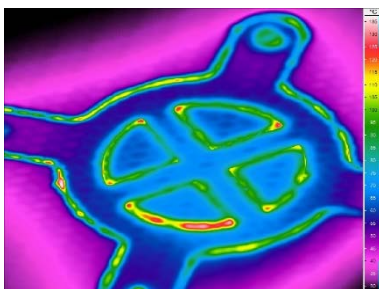
The cutting and welding of carbon fiber reinforced polymer composite (CFRP) requires a precisely defined energy input from the laser. Precision is vital as the carbon fibres only start to melt above 3,000 °C whereas the polymer matrix making up the composite has already begun to melt and vaporize at temperatures as low as 130 °C. Because of the wide variation in the thermo-physical properties of the fibre and matrix a highly precise and temporally resolved temperature measurement is required. Fast image acquisition is necessary as the operational cycles of the laser processes are often very short. Only by using such fast measurement capability can processes be understood overcoming thermal interference effects from the base material in the quality of cut edges and weld seams produced.



Temperature distribution during laser welding of CFRP

To investigate the emitted thermal radiation from the laser cutting and welding processes Dr. Peter Jäschke and his composite material team use a cooled camera operating in the mid-wave infrared waveband (2 ... 5) microns – the ImageIR® 8300 from InfraTec.

With two separate filter wheels, each with five positions, spectral anomalies during CFRP processing can be detected at a level of accuracy in temperature measurement of  $\pm 1\%$ . This high level of accuracy can only be achieved by the implementation of specially developed precision calibration methods to use the full dynamic range of the infrared detector as well as the integration of several calibration curves to guarantee for long-term stability and drift compensation. Using InfraTec's special lenses the smallest detail can be well resolved from a relatively large and therefore safe working distance.



Temperature distribution during laser cutting of a CFRP component

Control of the camera, acquisition, storage and analysis of measurement data is performed with the IRBIS® 3 thermographic software ensuring the efficient conversion of acquired data into usable knowledge.